

Audible, visual and tactile inspections for PdM personnel

By Lance Bisinger

[Figure 1. Problem Detection](#)

[Figure 2. Problem Analysis](#)

[Figure 3. Problem Correction](#)

[Figure 4. Correction Verification](#)

[Figure 5. Housekeeping](#)

[Figure 6. Oil Leak](#)

[Figure 7. Frame Crack](#)

[Figure 8. Motor Fan Cover](#)

[Figure 9. Oil Condition](#)

[Figure 10. Motor Check](#)

[Figure 11. Spot Radiometer](#)

[Figure 12. Strobe Light](#)



Figure 1. Problem Detection



Figure 2. Problem Analysis



Figure 3. Problem Correction

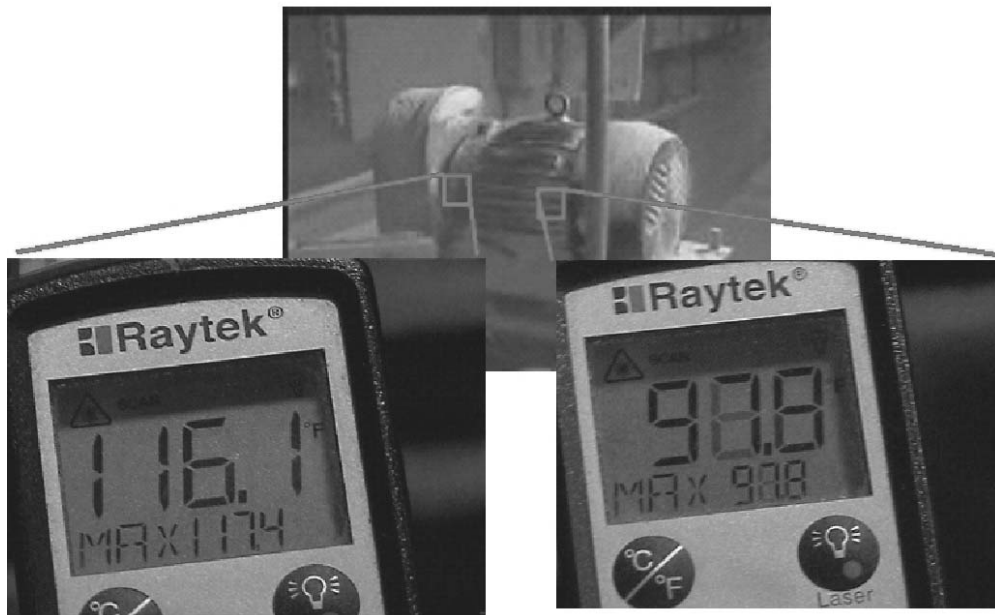


Figure 4. Correction Verification



Figure 5. Housekeeping



Figure 6. Oil Leak

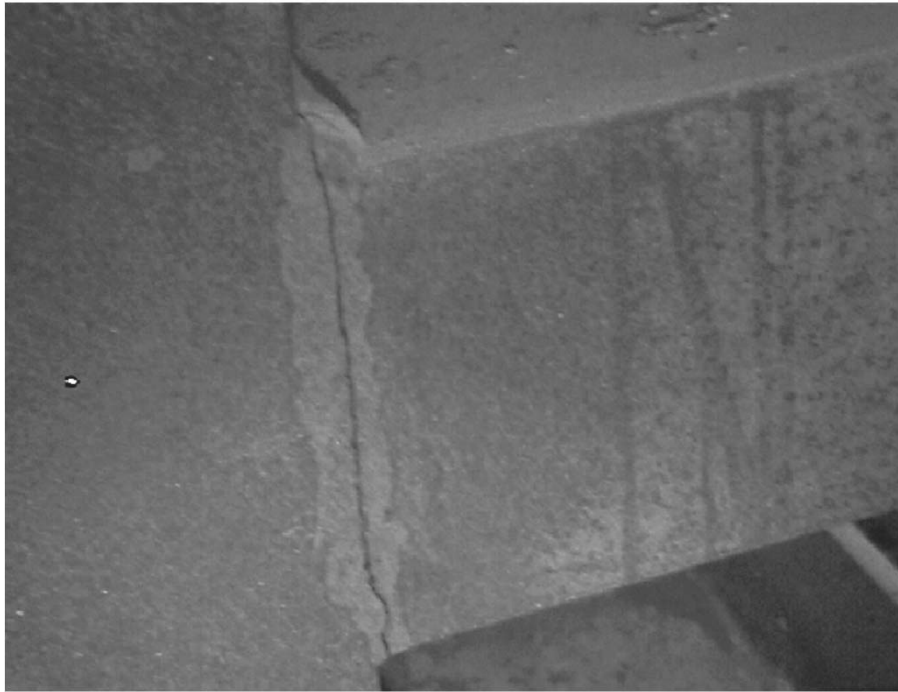


Figure 7. Frame Crack

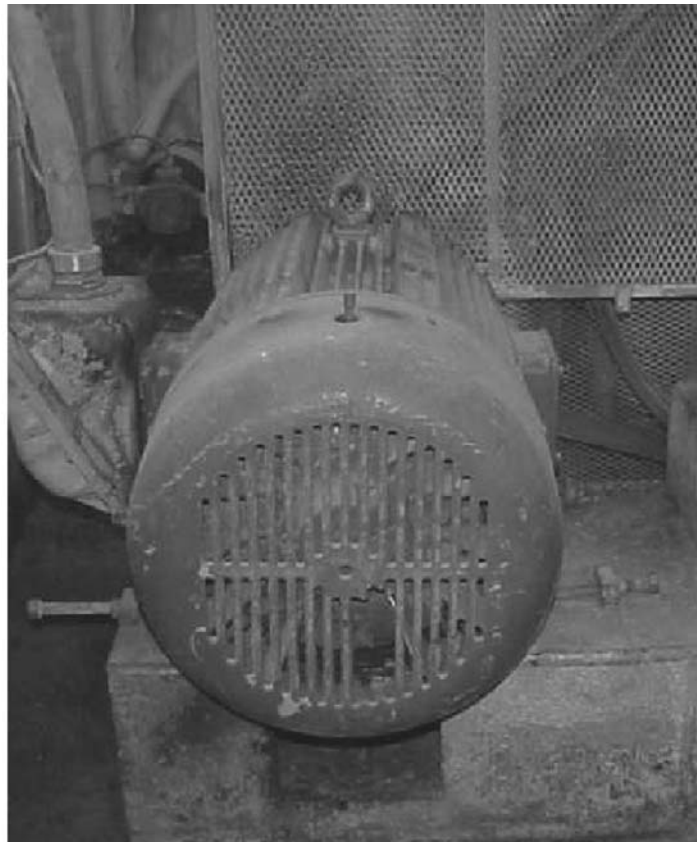


Figure 8. Motor Fan Cover



Figure 9. Oil Condition



Figure 10. Motor Check



Figure 11. Spot Radiometer



Figure 12. Strobe Light